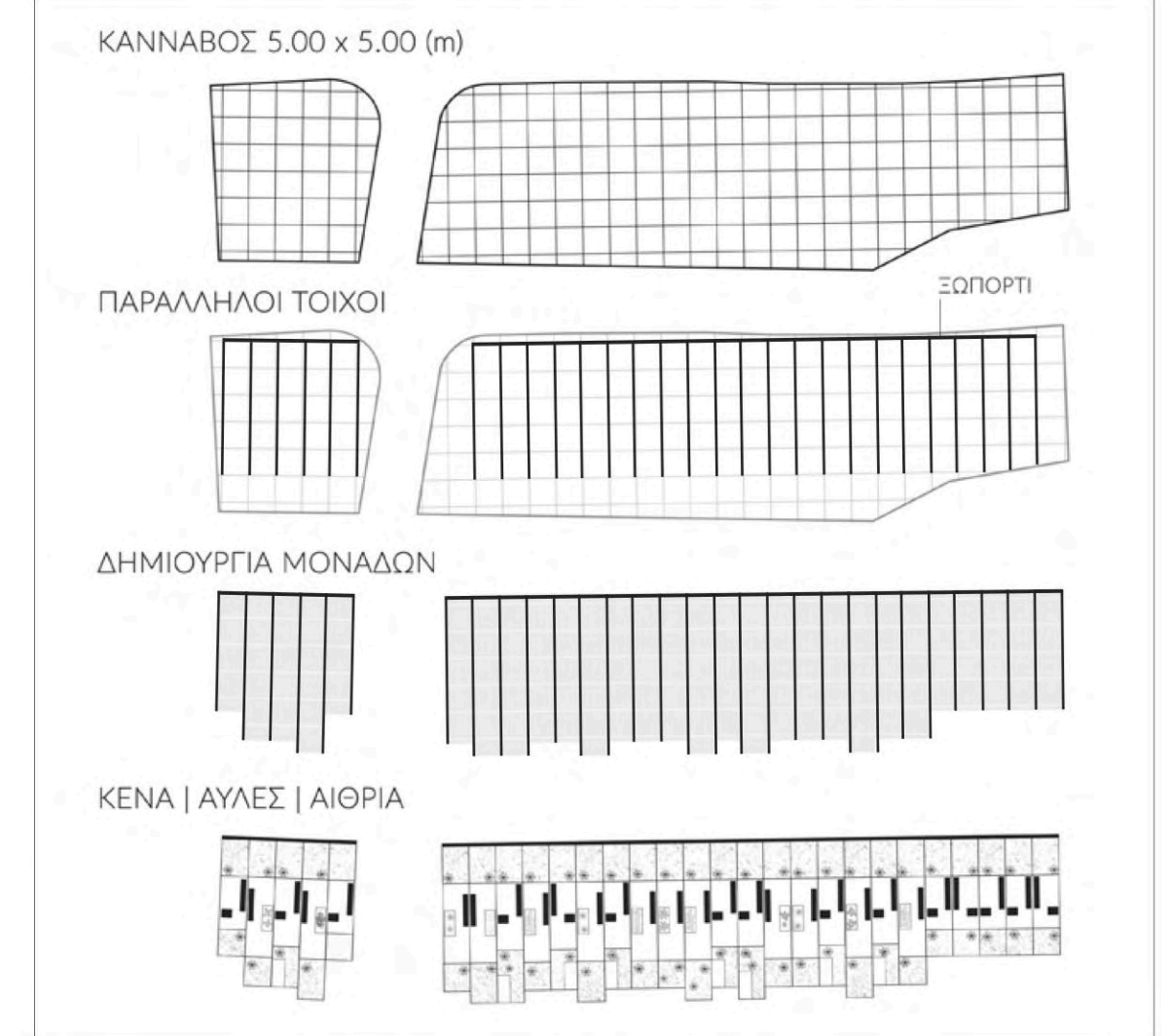
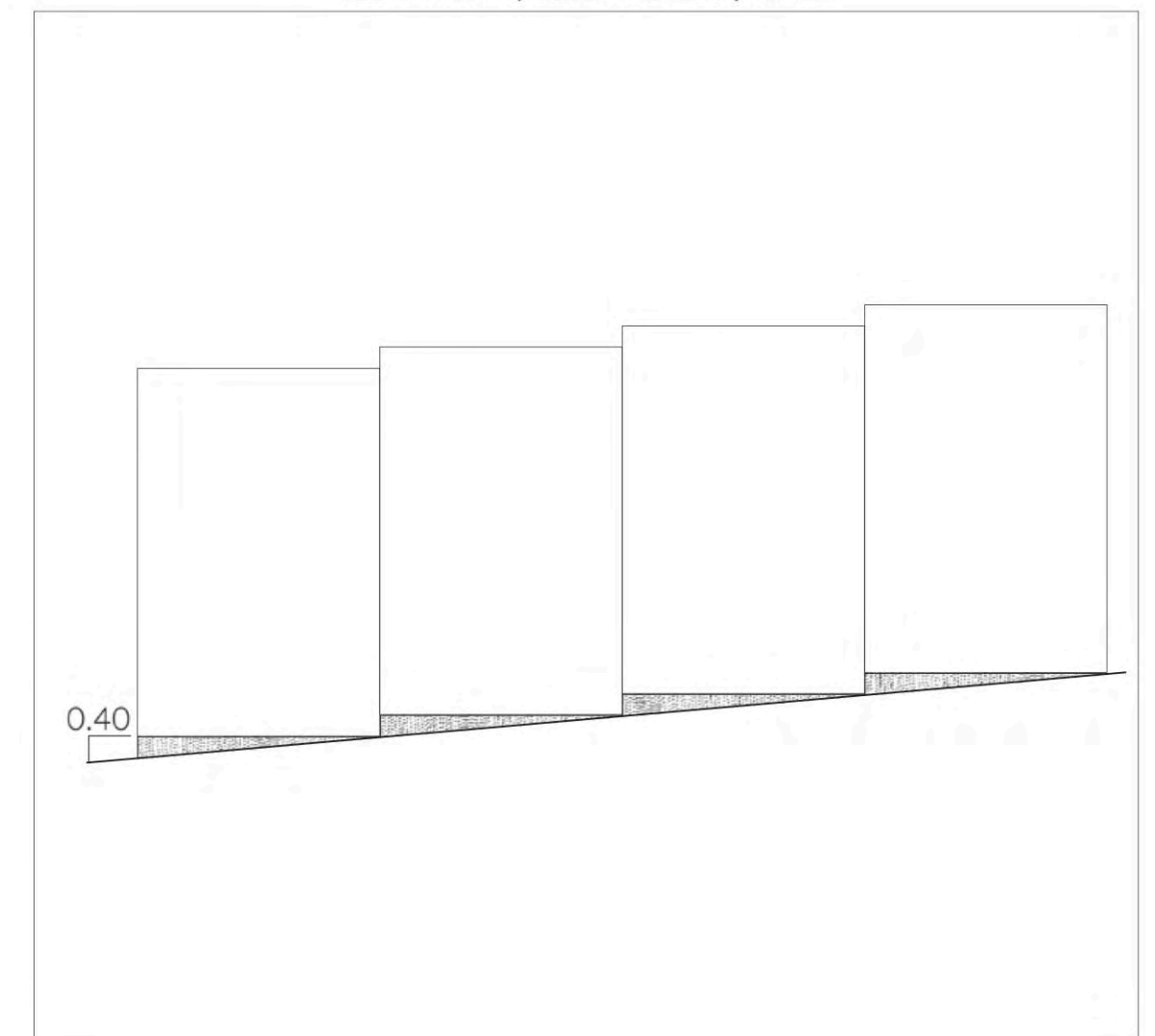
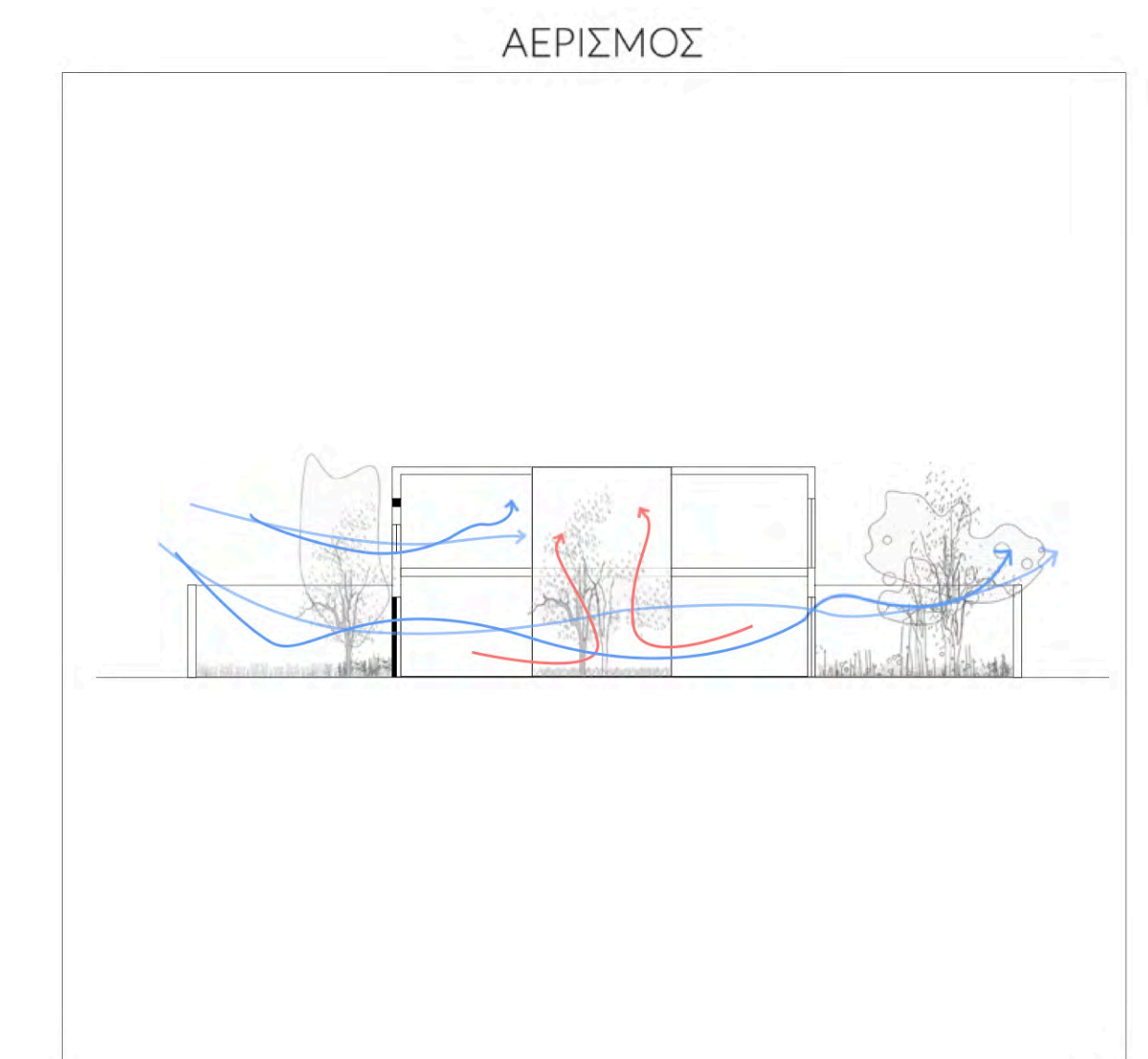
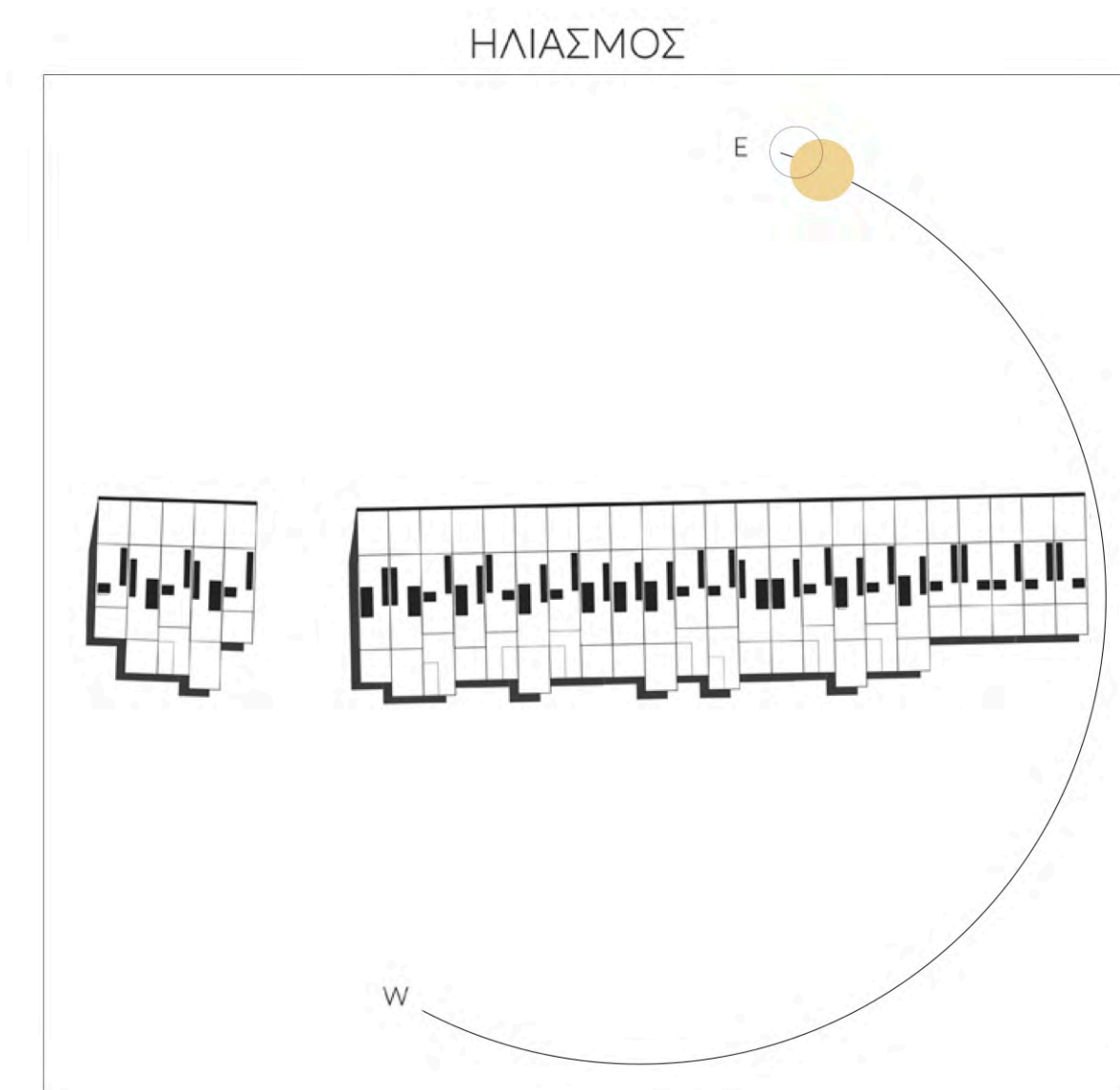
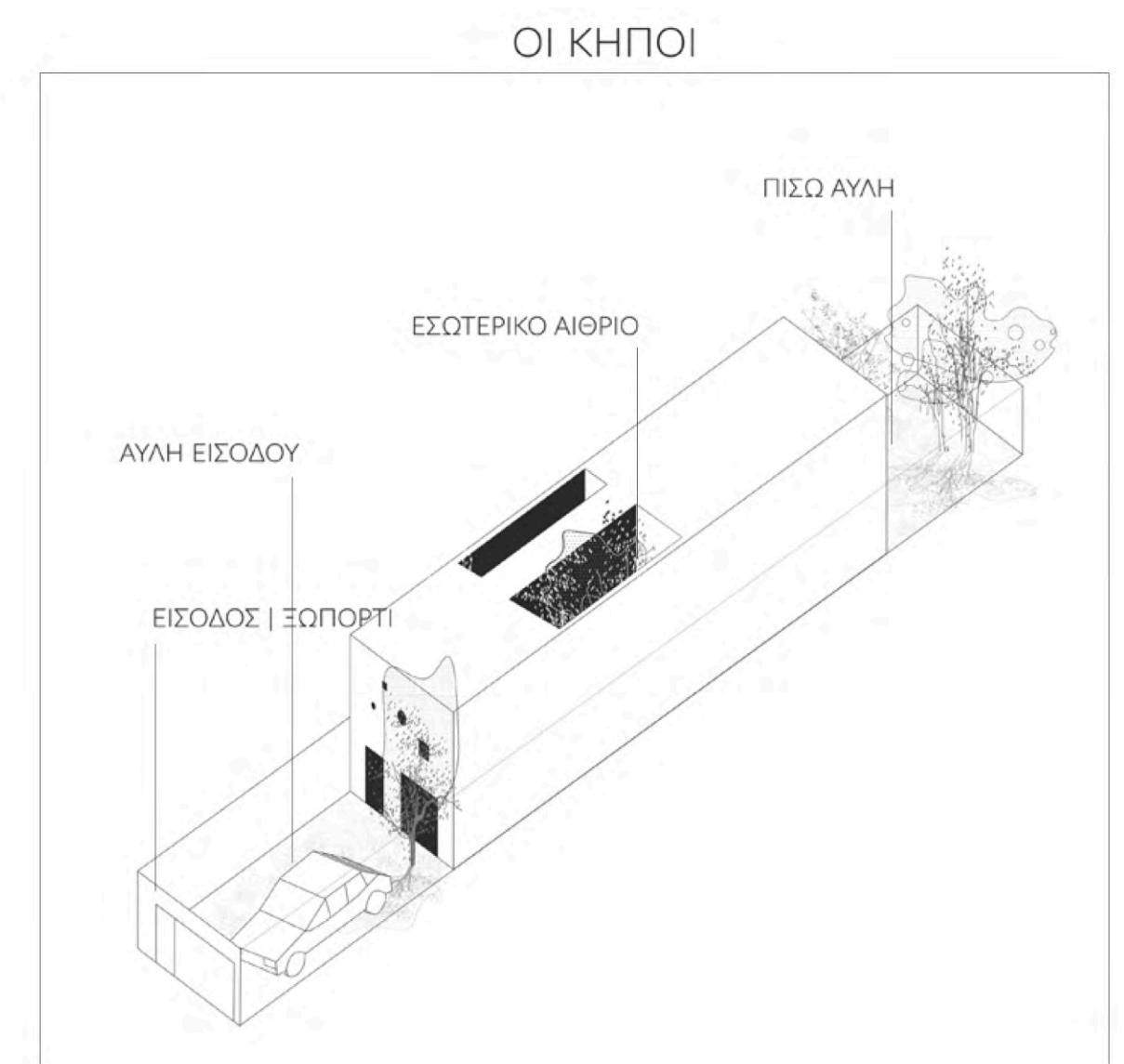
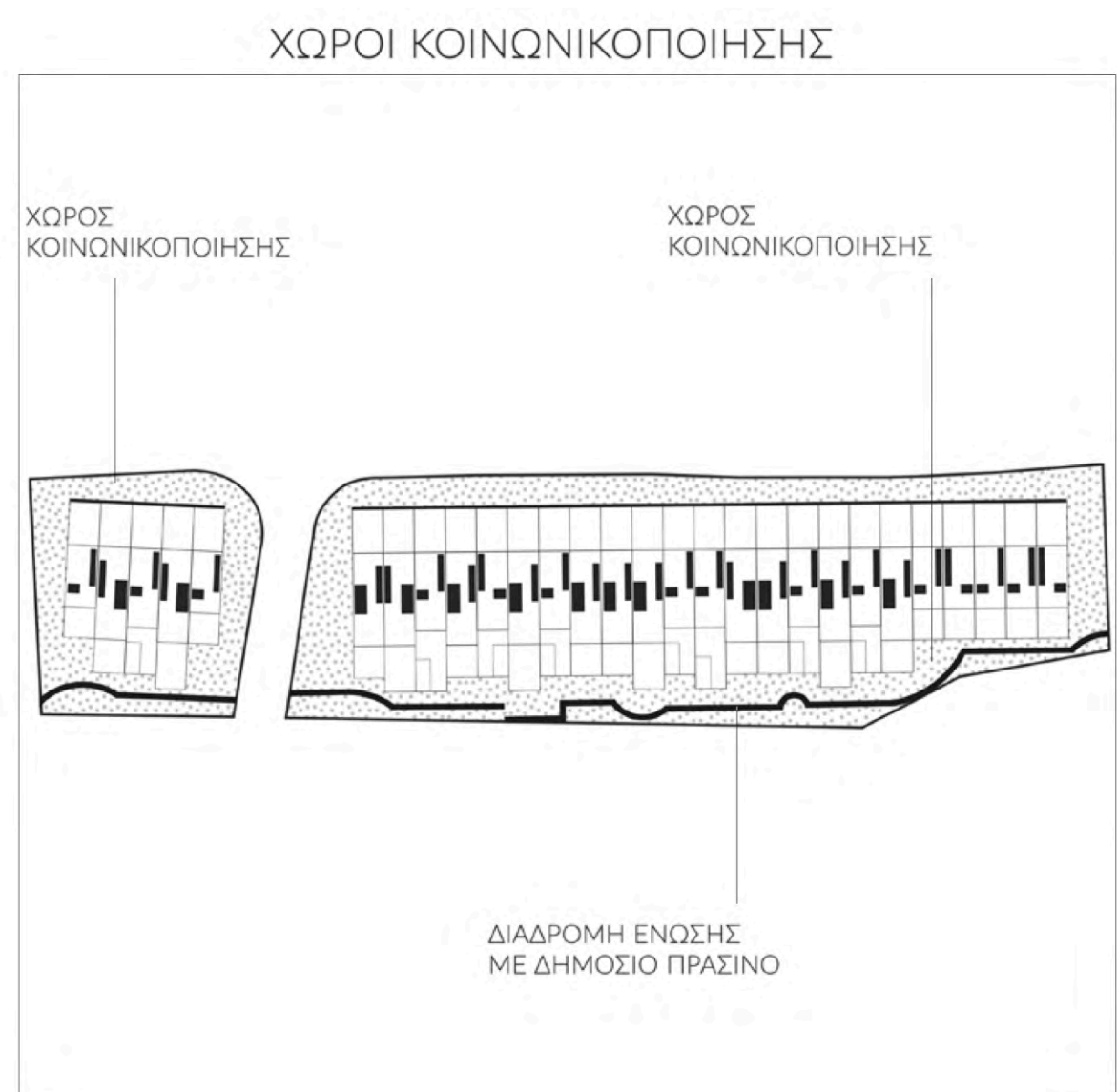
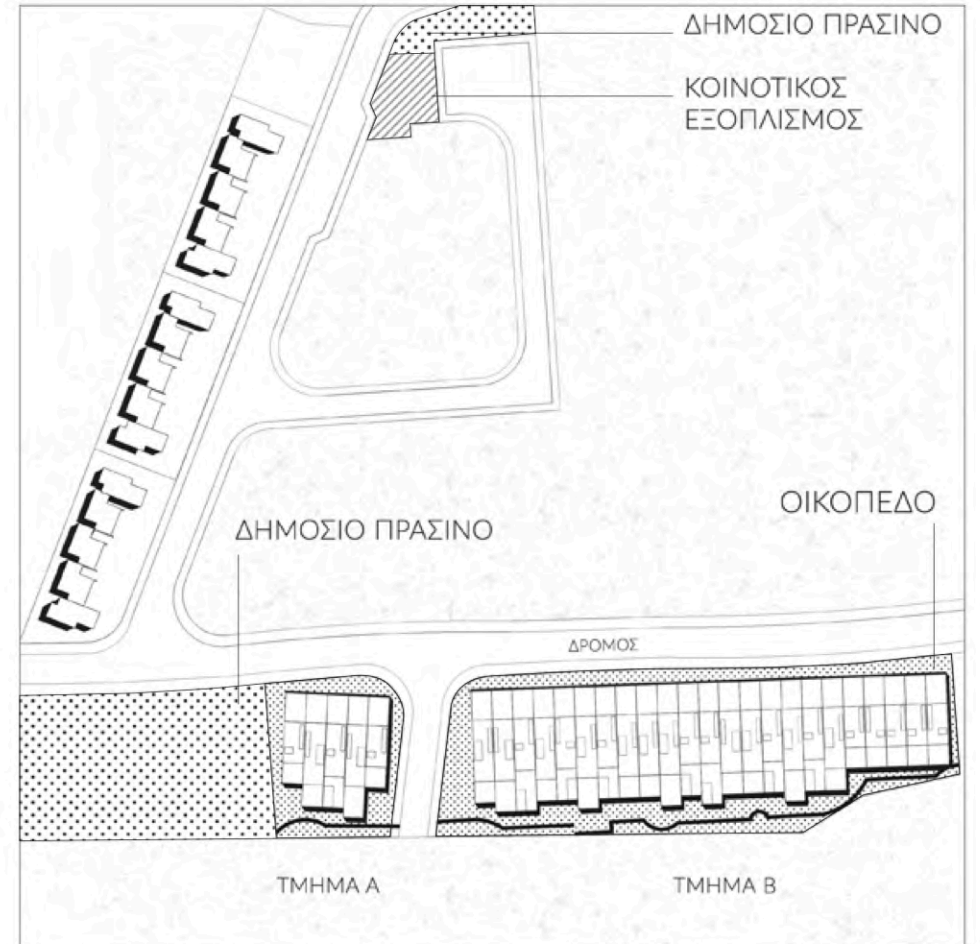
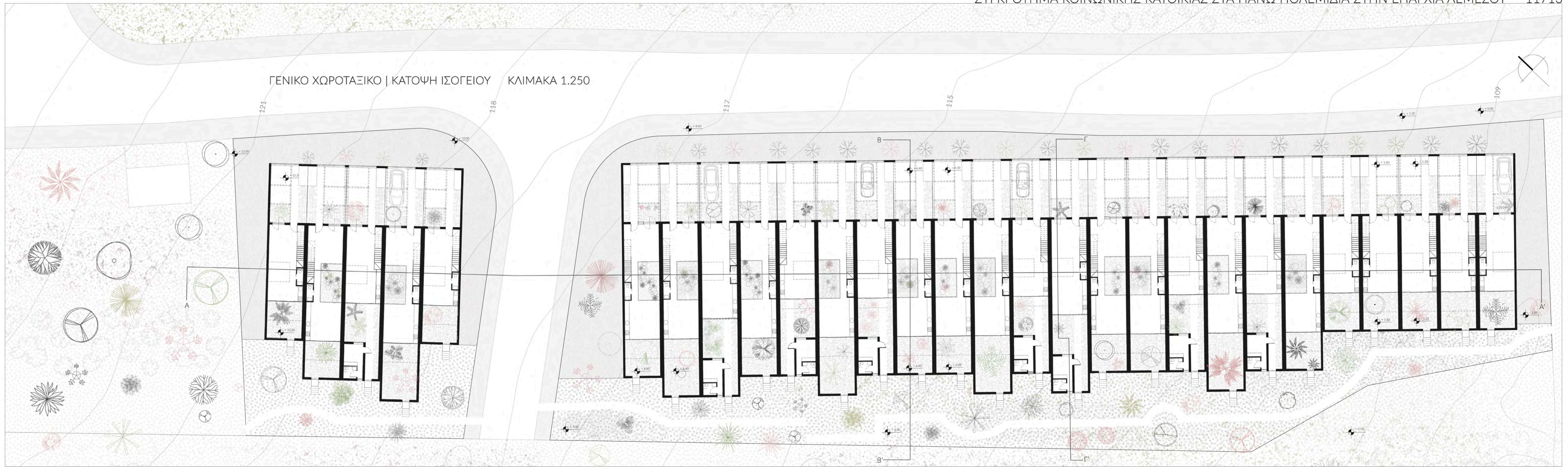


ΕΞΕΛΙΞΗ ΙΔΕΑΣ

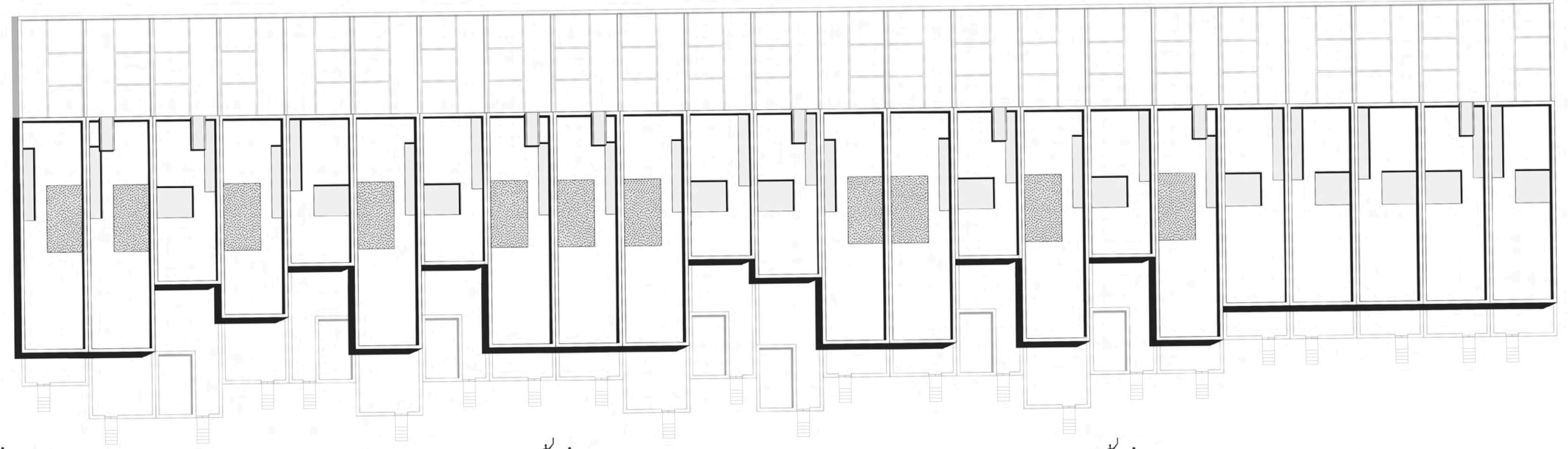
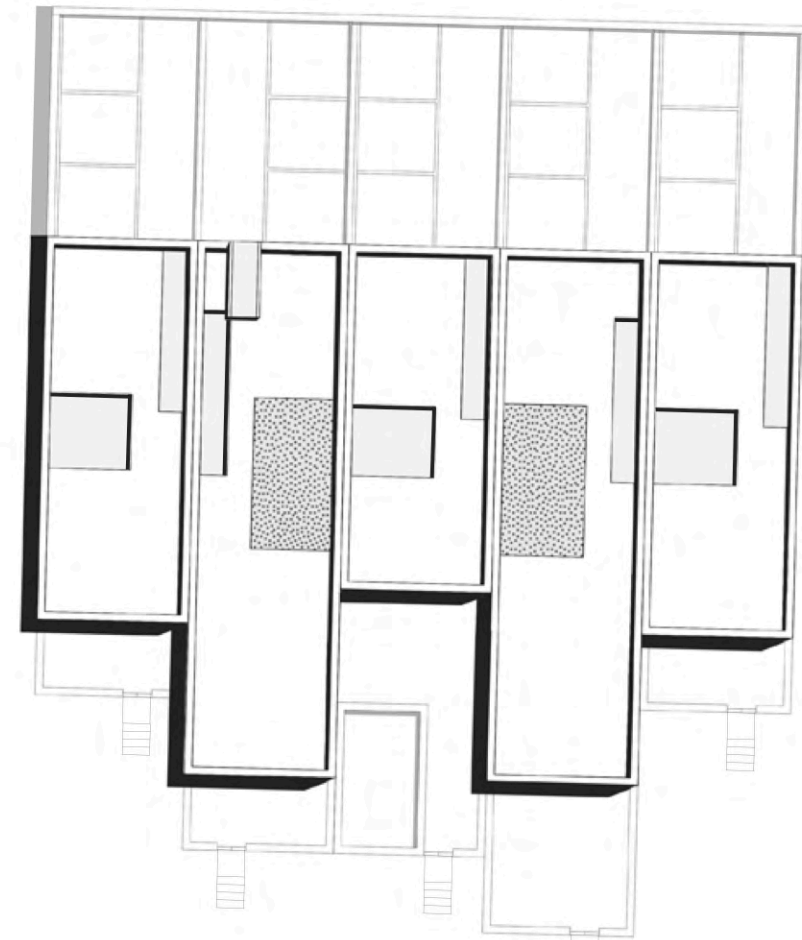


ΔΙΑΜΟΡΦΩΣΗ ΕΔΑΦΟΥΣ

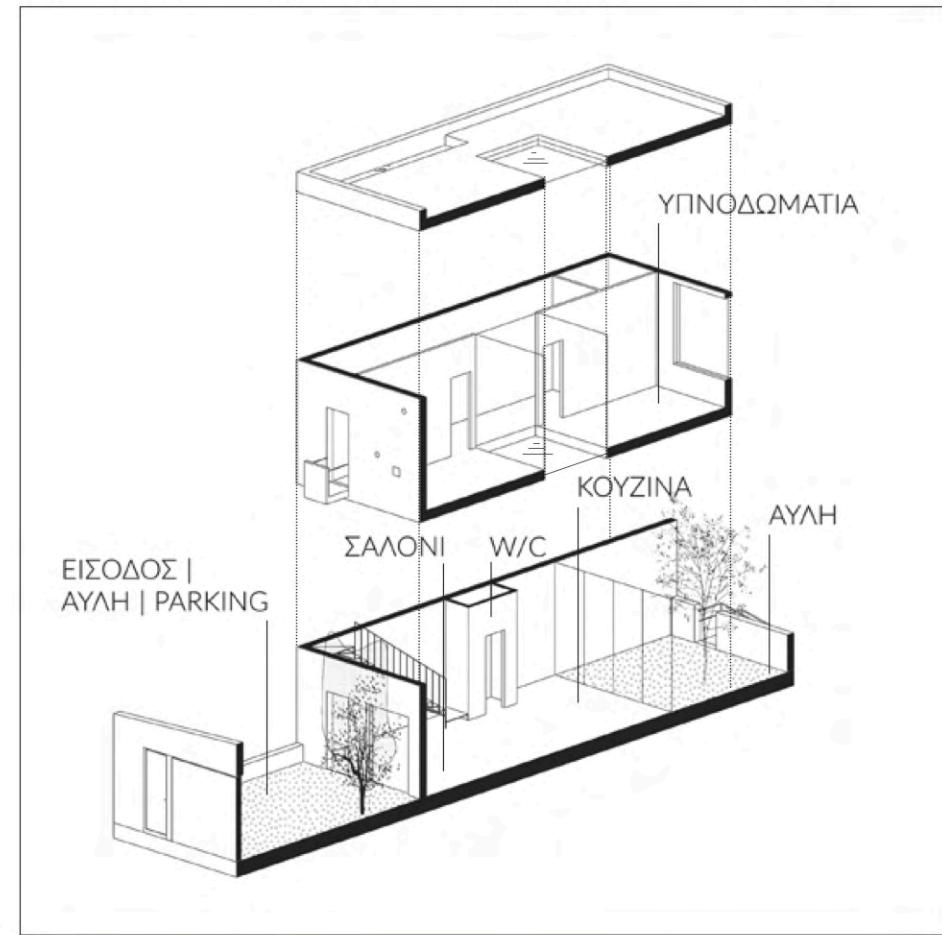




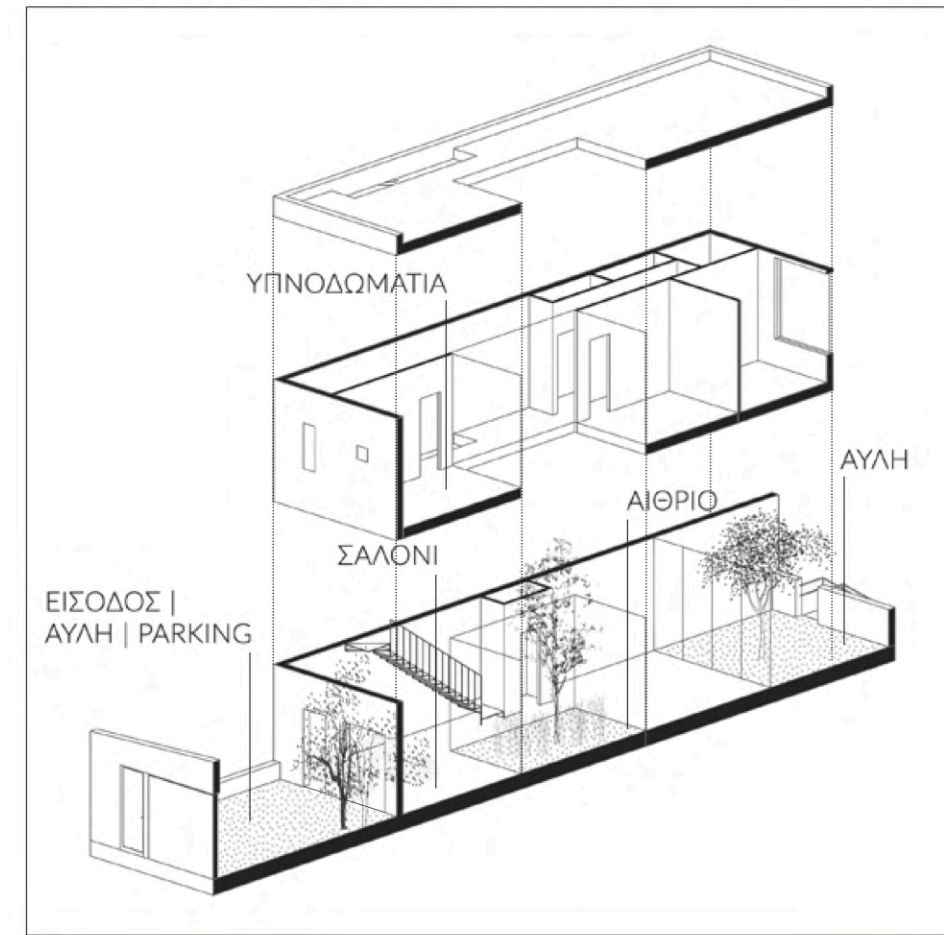
ΚΑΤΟΨΗ ΟΡΟΦΗΣ ΚΛΙΜΑΚΑ 1.250



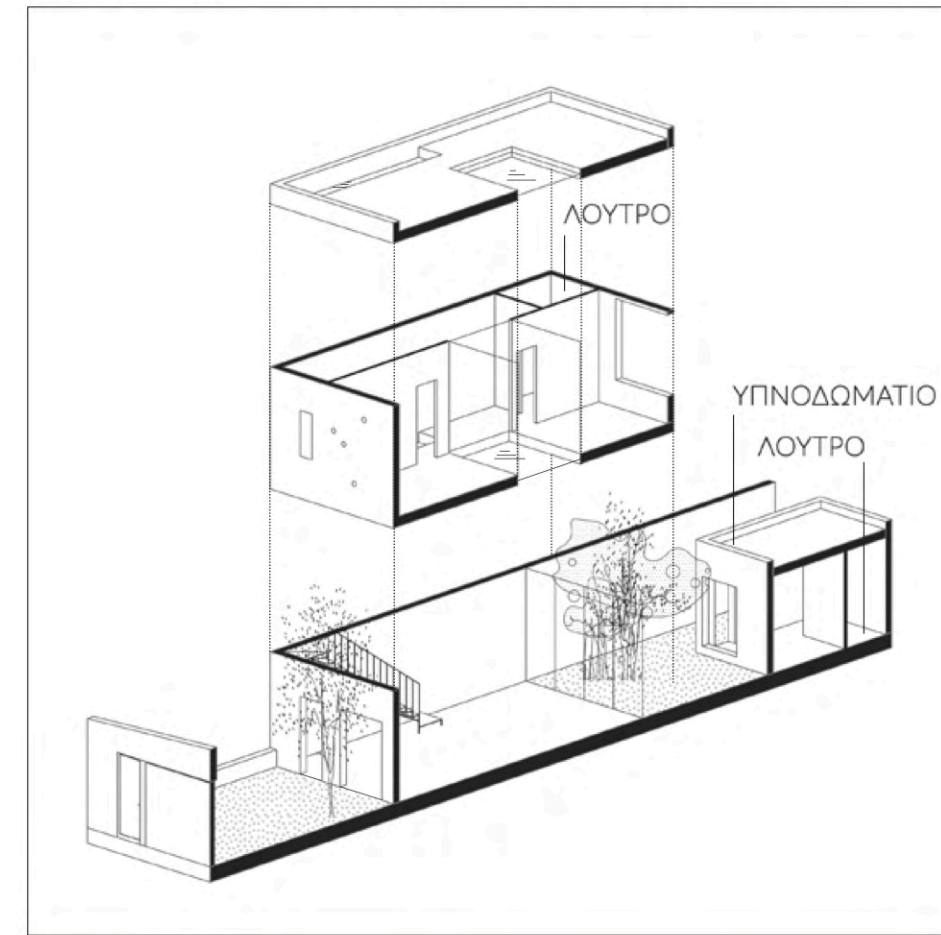
ΤΥΠΟΣ I 105m<sup>2</sup> ΑΡ. ΥΠ. 2



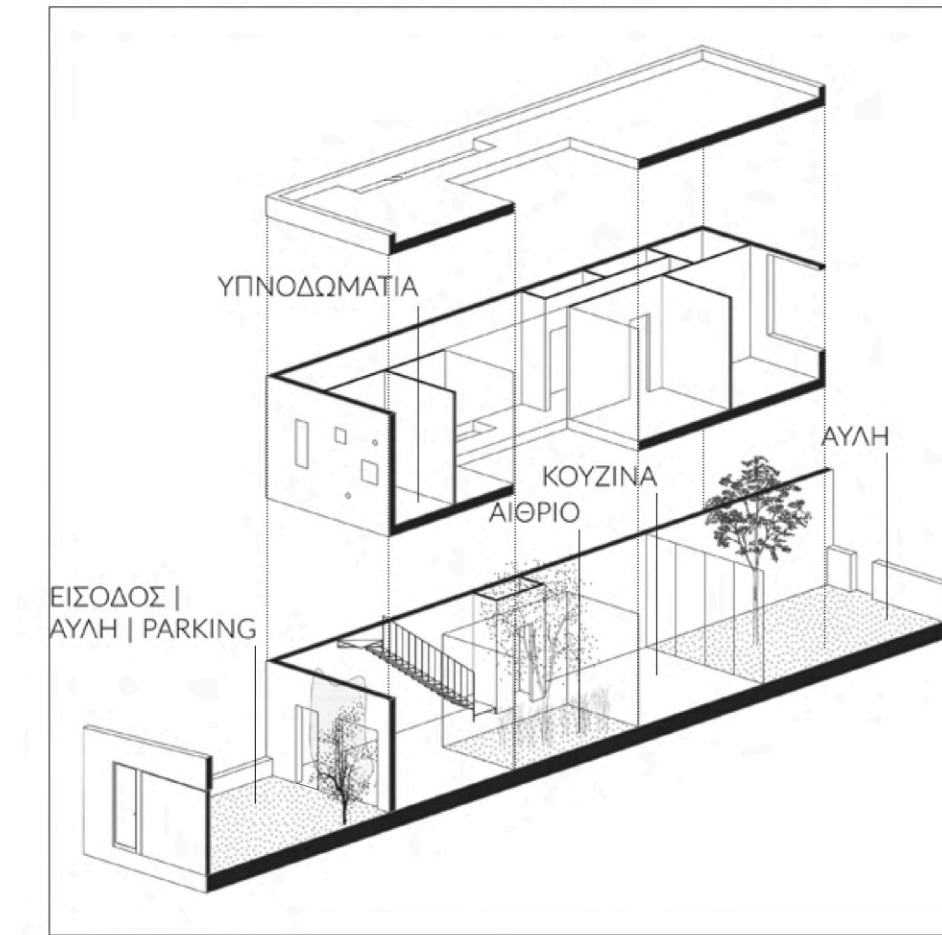
ΤΥΠΟΣ II 132m<sup>2</sup> ΑΡ. ΥΠ. 3



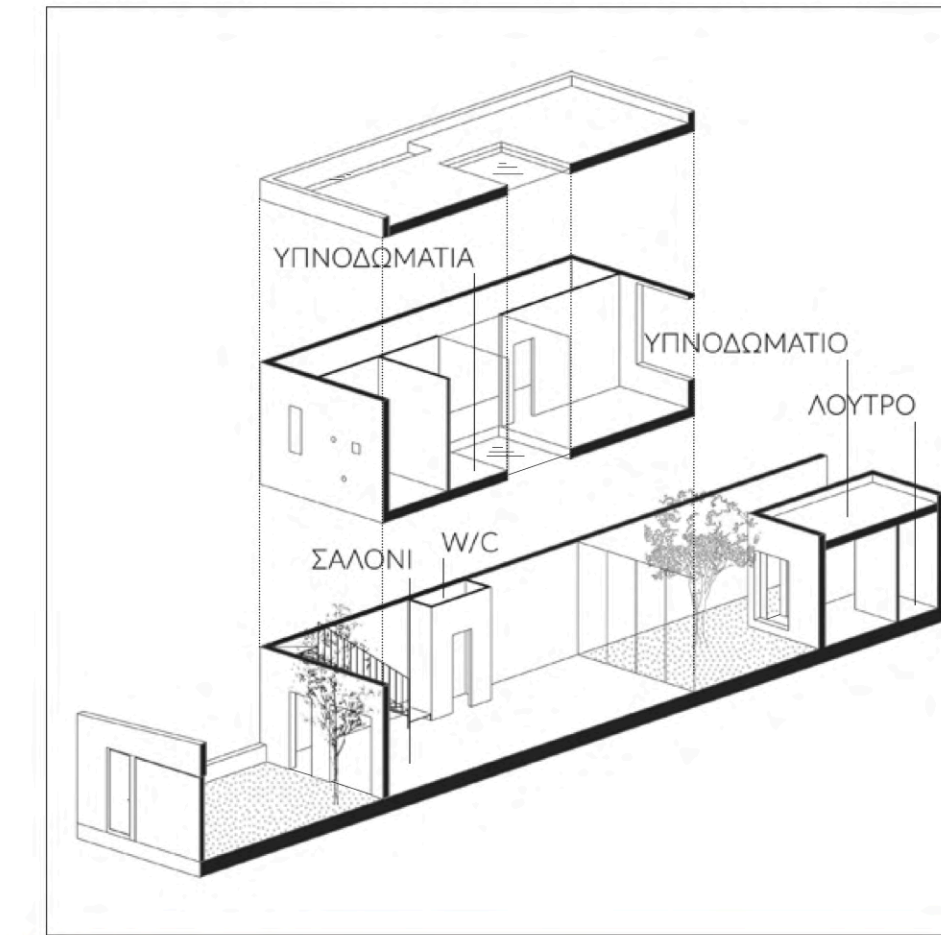
ΤΥΠΟΣ IIΑ 132m<sup>2</sup> ΑΡ. ΥΠ. 3



ΤΥΠΟΣ III 132m<sup>2</sup> ΑΡ. ΥΠ. 4



ΤΥΠΟΣ IIIΑ 132m<sup>2</sup> ΑΡ. ΥΠ. 4



ΒΟΡΕΙΟΑΝΑΤΟΛΙΚΗ ΟΨΗ ΚΛΙΜΑΚΑ 1.250



ΒΟΡΕΙΟΑΝΑΤΟΛΙΚΗ ΟΨΗ ΚΛΙΜΑΚΑ 1.250



ΤΟΜΗ Α'Α ΚΛΙΜΑΚΑ 1.250



ΝΟΤΙΟΔΥΤΙΚΗ ΟΨΗ ΚΛΙΜΑΚΑ 1.250



ΤΟΜΗ Β'Β ΚΛΙΜΑΚΑ 1.250



ΤΟΜΗ Γ'Γ ΚΛΙΜΑΚΑ 1.250



ΔΙΑΓΡΑΜΜΑ ΕΝΑΛΛΑΚΤΙΚΩΝ ΑΝΟΙΓΜΑΤΩΝ ΒΟΡΕΙΟΑΝΑΤΟΛΙΚΗΣ ΟΨΗΣ

